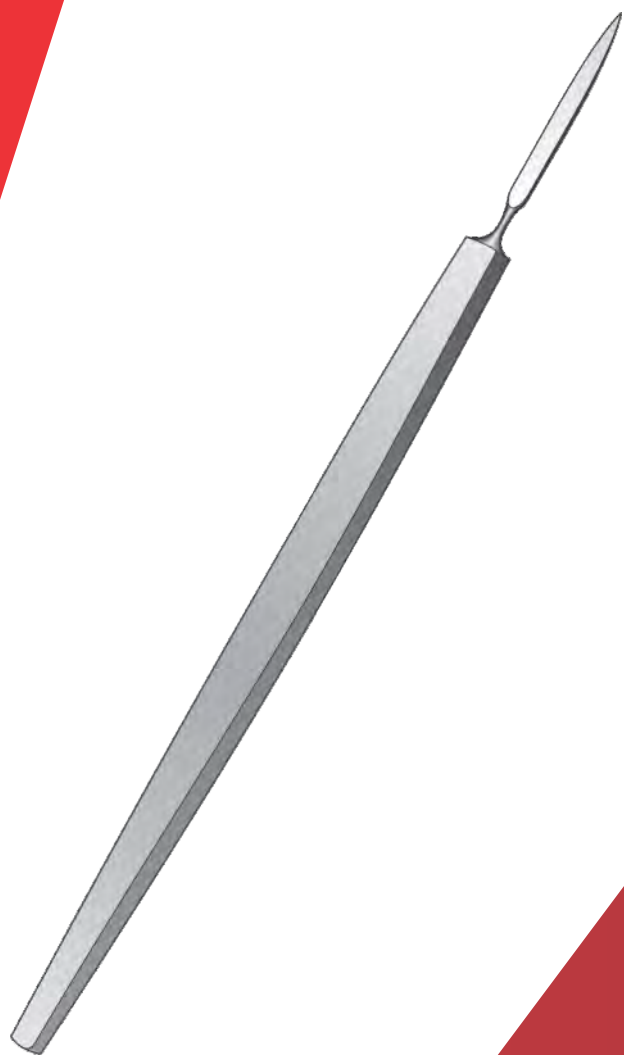


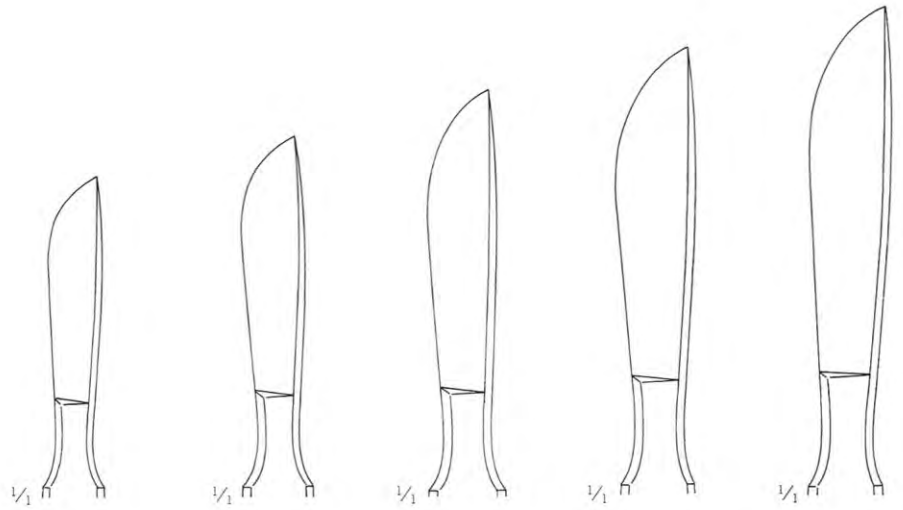
Diagnosics

01



WELMED
INSTRUMENTS CO.

Abraham	15
Amputation Knives	06
Aorta Punches	24
Ayre	17
Bergmann	03
Brunngs	15
Catlin	05
Catlin	07
Dieffenbach	03
Disecting Knives	01
Fower	15
Graefe	02
Halle	18
Joseph	16
Langenbeck	05
Langenbeck	06
Langenbeck	08
Liston	05
Masing	16
Olivecrona	15
Post Mortem Knives	09
Resection Amputation	11
Scalpel Handles	20
Scalpel Handles	21
Scalpel Handles	22
Scalpel Handles	23
Scalpel	19
Scalpels	04
Schink	25
Segond	17
Simon	17
Tonnis	18
Ulrich	17
Virchow	10
Virchow	13
Virchow	14
Walb	12
Ziegler	18



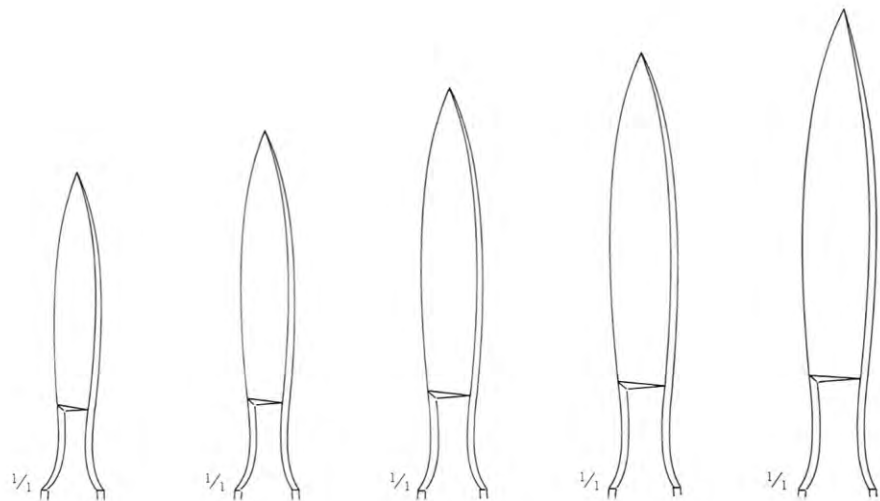
BC-01-101
 Fig. 1
 15 cm / 6"
 30 mm

BC-01-102
 Fig. 2
 15 cm / 6"
 36 mm

BC-01-103
 Fig. 3
 15.5 cm / 6"
 40 mm

BC-01-104
 Fig. 4
 16 cm / 6¼"
 45 mm

BC-01-105
 Fig. 5
 16 cm / 6¼"
 50 mm



BC-01-106
 Fig. 6
 15 cm / 6"
 27 mm

BC-01-107
 Fig. 7
 15 cm / 6"
 35 mm

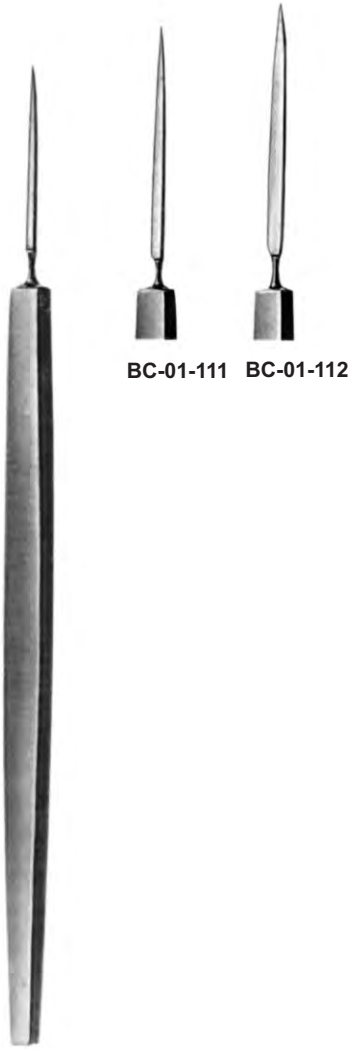
BC-01-108
 Fig. 8
 16 cm / 6¼"
 40 mm

BC-01-109
 Fig. 9
 16 cm / 6¼"
 47 mm

BC-01-110
 Fig. 10
 17 cm / 6¾"
 50 mm

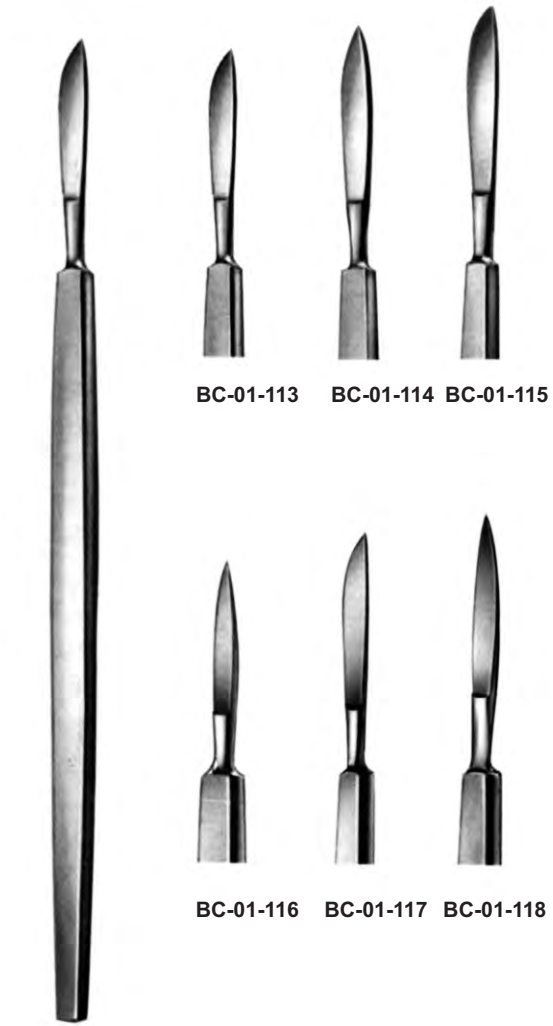


With metal handle
 con mango metálico
 avec manche en métal



BC-01-111 BC-01-112

Graefe
130 mm/ 5½"



BC-01-113 BC-01-114 BC-01-115

BC-01-116 BC-01-117 BC-01-118

130 mm/ 5½"



BC-01-119



BC-01-120



BC-01-121



BC-01-122



BC-01-123



BC-01-124



BC-01-125



BC-01-126



BC-01-127

Bergmann
140 mm / 5½"

135 mm / 5¼"

Dieffenbach
160 mm / 6¼"

160 mm / 6¼"



BC-01-128 BC-01-129 BC-01-130 BC-01-131 BC-01-132 BC-01-133 BC-01-134 BC-01-135 BC-01-136 BC-01-137



BC-01-138 BC-01-139 BC-01-140 BC-01-141 BC-01-142 BC-01-143 BC-01-144 BC-01-145 BC-01-146 BC-01-147

Tenotom
Tenotome

140 mm / 5½"
175 mm / 7"



Liston
BC-01-148 130 mm / 5 $\frac{1}{8}$ "
BC-01-149 160 mm / 6 $\frac{1}{4}$ "
BC-01-150 190 mm / 7 $\frac{1}{2}$ "
BC-01-151 220 mm / 8 $\frac{3}{4}$ "
Length Of blade
Amputationsmesser
Amputation knives



Double Cutting

Catlin
BC-01-152
160 mm / 6 $\frac{1}{4}$ "
Length Of blade
Amputationsmesser
Amputation knife



Langenbeck
BC-01-153
120 mm / 4 $\frac{3}{4}$ "
Length Of blade
Lappensmesser
Flap knife



BC-01-154
105 mm / 4 $\frac{1}{8}$ "
Length Of blade
Phalangenmesser
Phalangeal Knife



Double Cutting

BC-01-155
110 mm / 4 $\frac{3}{8}$ "
Length Of blade
Zwischenknochen-messer
Interosseous knife



BC-01-156
65 mm / 2 $\frac{1}{2}$ "
Length Of blade
Beinhatmesser
Mit Schaber
Periosteum knife
With Raspatory



BC-01-157



BC-01-158



Langenbeck
55 mm / 2 $\frac{1}{8}$ "
Length Of blade
Resektionsmesser
Resection knives



BC-01-159
29 cm / 11½"
With hollow handle
con mango hueco
avec manche creux



BC-01-160
32.5 cm / 12¾"
With hollow handle
con mango hueco
avec manche creux



Catlin
BC-01-161
29 cm / 11½"
With hollow handle
con mango hueco
avec manche creux



BC-01-162
18 cm / 7"
Solid handle, dissecting end
mango macizo, con periostótomo
manche solide á rugine



Langenbeck
BC-01-163
18 cm / 7"



Langenbeck
BC-01-164
18 cm / 7"



BC-01-165
55 mm / 2 $\frac{1}{8}$ "
Length of blade
mit Schaber,
holzheft
with raspator,
wooden handle



BC-01-166
55 mm / 2 $\frac{1}{8}$ "
Length Of blade
Metallheft
Metal handle



BC-01-167
70 mm / 2 $\frac{3}{4}$ "
Length of blade
Holzheft
Wooden handle



1/2

Virchow
BC-01-168
85 mm / 3 3/8"
Length of blade
Metallheft
Metal handle



1/2

Virchow
BC-01-169
95 mm / 3 3/4"
Length of blade
Holzheft
Wooden handle



1/2

BC-01-170
115 mm / 4 1/2"
Length of blade
Holzheft
Wooden handle



BC-01-171
80 mm / 3 $\frac{1}{8}$ "
Length of blade
Metallheft
Metal handle



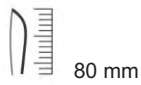
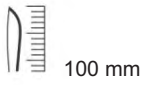
BC-01-172
130 mm / 3 $\frac{3}{8}$ "
Length of blade
Metallheft
Metal handle



BC-01-173
195 mm / 7 $\frac{3}{4}$ "
Length of blade
Metallheft
Metal handle



BC-01-174
100 mm / 4"
Length of blade
Metallheft
Metal handle



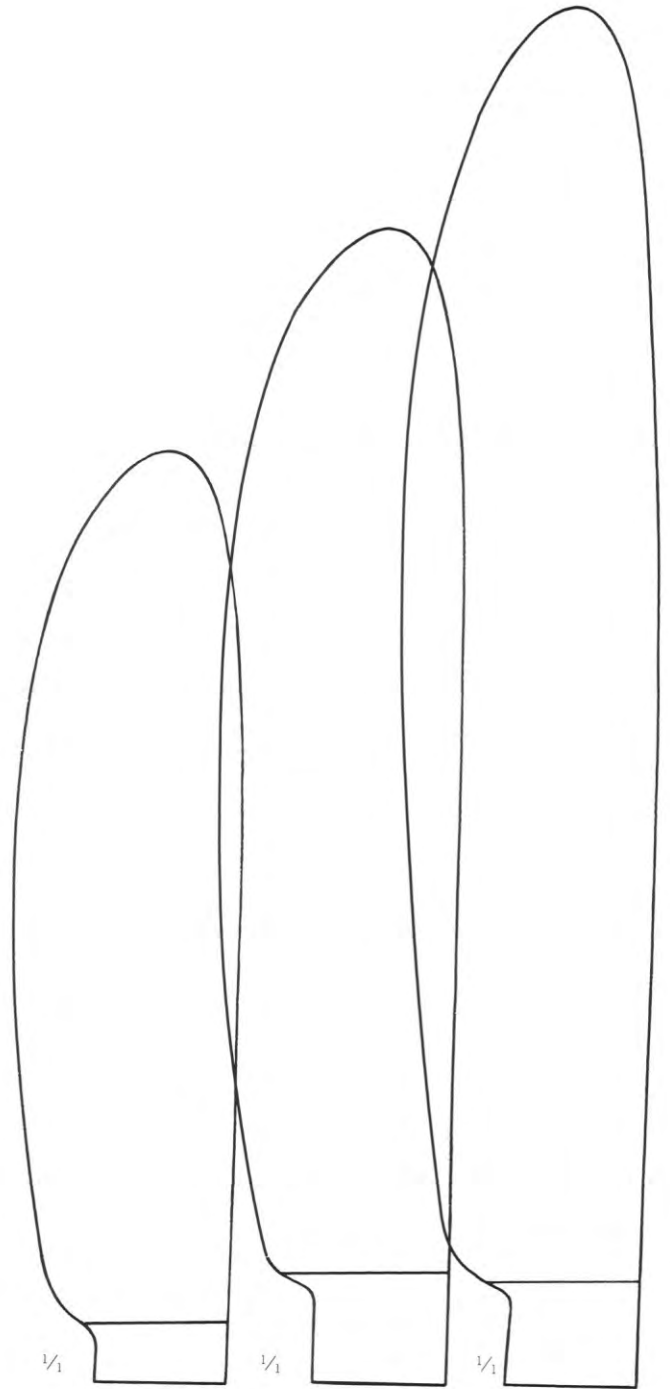
BC-01-175
25.5 cm / 10"
With wooden handle
con mango de madera
avec manche en bois



BC-01-176
21 cm / 8¼"
With wooden handle
con mango de madera
avec manche en bois



Walb
With wooden handle
con mango de madera
avec manche en bois



BC-01-177
26 cm / 10¼"
110 mm



BC-01-178
29 cm / 11½"
140 mm



BC-01-179
31 cm / 12¼"
170 mm





BC-01-180
110 cm / 4 $\frac{3}{4}$ "
Length of blade
Holzheft
Wooden handle



BC-01-181
170 cm / 6 $\frac{3}{4}$ "
Length of blade
Holzheft
Wooden handle



Virchow
BC-01-182
160 cm / 6 $\frac{1}{4}$ "
Length of blade
Metallheft
Metal handle



Virchow
BC-01-183
200 mm, 8"
Length of blade
Metallheft
Metal handle



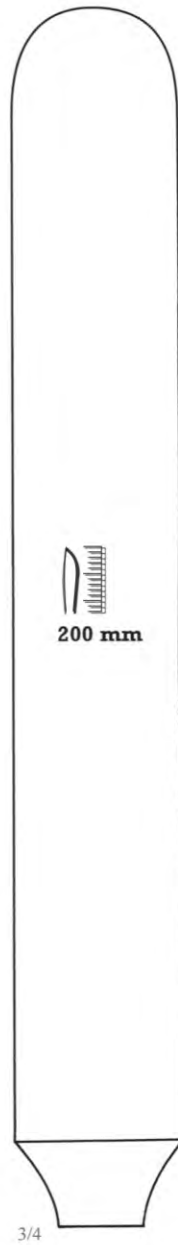
Virchow
BC-01-184
240 mm, 9 $\frac{1}{2}$ "
Length of blade
Metallheft
Metal handle



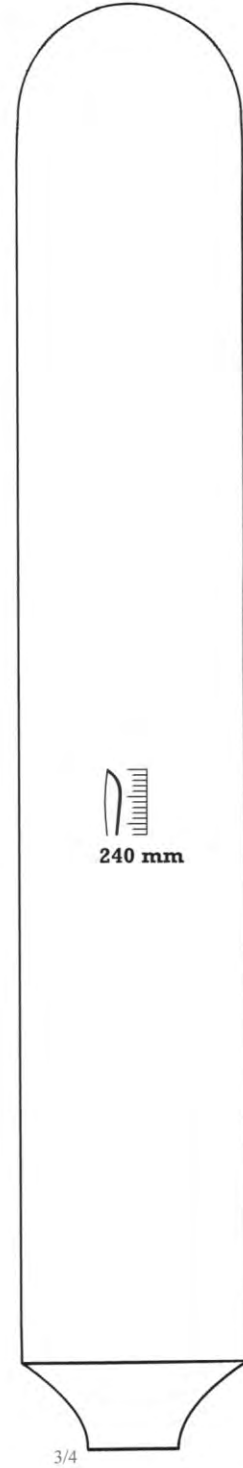
Virchow
With hollow handle
con mango hueco
avec manche creux



BC-01-185
26 cm / 10 $\frac{1}{4}$ "



BC-01-186
33.5 cm / 13 $\frac{1}{4}$ "



BC-01-187
38 cm / 15"



Olivecrona
BC-01-188
Trigeminal knife
205 mm / 8"



BC-01-189
Trigeminal knife
230 mm / 9"



Fowler
BC-01-190
Tonsil knife
200 mm / 8"



Abraham
BC-01-191
Tonsil knife
215 mm / 8½"



Brünings
BC-01-192
Tonsil knife
215 mm / 8½"



Masing
BC-01-193
Cartilage slitting knife,
curved blade, pointed
130 mm / 5"



BC-01-194
Abscess knife
130 mm / 5 1/8"



Joseph
BC-01-195 straight
BC-01-196 curved
double-edged nasal knives, pointed
145 mm / 5 3/4"



BC-01-195



BC-01-196





BC-01-197

BC-01-198

BC-01-199

¼

⅝

Simon
 Fistula knives
 200 mm / 8"

Ulrich
BC-01-200
 Fistula knife
 225 mm / 9"

Ayre
BC-01-201
 Cone knife
 235 mm / 9¼"

BC-01-202
 Cone knife
 230 mm / 9"

Second
BC-01-203
 Myomatome
 270 mm / 10½"



Ziegler
BC-01-204 small
BC-01-205 pointed
Milienmesser
Milium knives
120 mm / 4¾"



Tönnis
BC-01-206
Duramesser
Dura knife
130 mm / 5"



Tönnis
BC-01-207
Duramesser
Dura knife
190 mm / 7½"




Halle
BC-01-208
Duramesser
Dura knife
210 mm / 8¼"




 Fig. 18-36


BC-01-209
 13.5 cm / 5¼"
 No. 4
 Solid
 Macizo
 Solide




 Fig. 10-36

BC-01-210
 16 cm / 6¼"
 No. 3 & 4
 Solid, double ended
 Macizo, doble extremo
 Solide, double



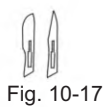

 Fig. 18-36

BC-01-211
 21 cm / 8¼"
 No. 4L
 Solid, long
 Macizo, largo
 Solide, long

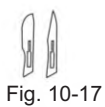



 Fig. 18-36

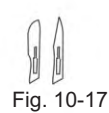
BC-01-212
 21 cm / 8¼"
 No. 4L
 Solid, angled, long
 Macizo, angulado, largo
 Solide, coude, long



BC-01-218
No. 7
16 cm / 6¼"
solid
macizo
solide



BC-01-219
No. 7K
12.5 cm / 5"
Solid, short
macizo, corto
solide, court



BC-01-220
No. 3
15.5 cm / 6"
With round hollow handle
con mango hueco redondo
avec manche creux rond



BC-01-221
No. 3
12.5 cm / 5"
With plastic handle
con mango plastico
avec manche en matiere plastique



Fig. 18-36

BC-01-222
No. 8
13.5 cm / 5¼"
with hollow handle
con mango hueco
avec manche creux

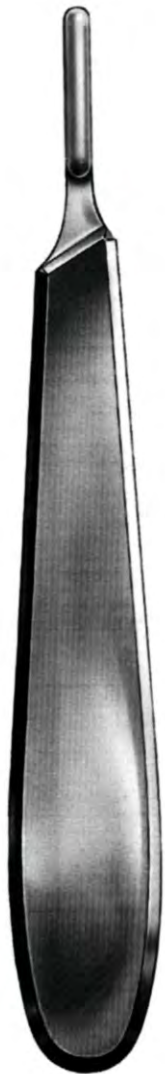


Fig. 18-36

BC-01-223
No. 9
14.5 cm / 5¾"
with hollow handle
con mango hueco
avec manche creux



Fig. 18-36

BC-01-224
No. 4
13.5 cm / 5¼"
with plastic handle
con mango plastico
avec manche en matiere plastique



Fig. 10-17

BC-01-225
 No. 3
 14.5 cm / 5¾"
 solid, round
 macizo, redondo
 solide, rond



Fig. 10-17

BC-01-226
 No. 3
 14 cm / 5½"
 Solid, round, angled
 macizo, redondo, angulado
 solide, rond, coude



Fig. 10-17

Kaye
BC-01-227
 No 3
 15 cm / 6"
 Solid, round
 redondo
 solide, rond



BC-01-228
 13.5 cm / 5¼"
 For micro scalpel blades
 para micro hojas
 pour micro-lame de bisturis



BC-01-229
 13.5 cm / 5¼"



BC-01-236
16 cm / 6 1/4"
Cutting diameter 4 mm
diametro del corte 4 mm
diametro du tranchant 4 mm

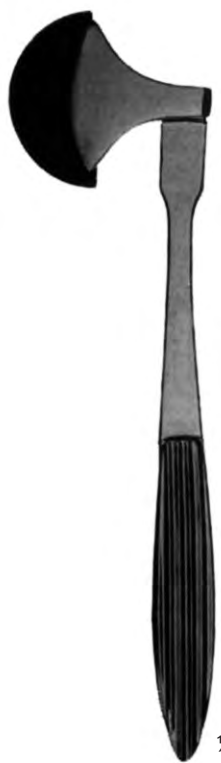


BC-01-237
16 cm / 6 1/4"
Cutting diameter 5 mm
diametro del corte 5 mm
diametre du tranchant 5 mm



1/2

Taylor
BC-01-238 18 cm / 7"
BC-01-239 20 cm / 8"



1/2

Berliner
BC-01-240
20 cm / 8"



1/2

Dejerine
BC-01-241
20 cm / 8"



1/2

Dejerine
BC-01-242
21.5 cm / 8½"
with needle
con aguja
avec aiguille



Buck
BC-01-243
18 cm / 7"
Hammer for neurological examination, with brush & needle
Martillo para exámenes neurológicos, con cepillo y aguja
Marteau avec brosse et aiguille pour examens neurologiques

Rabiner
BC-01-244
23.5 cm / 9¼"
Hammer for neurological examination, with brush & needle
Martillo para exámenes neurológicos, con cepillo y aguja
Marteau avec brosse et aiguille pour examens neurologiques

Troemner
BC-01-245
23 cm / 9"